

**ST. MARY'S**  
**CONDOMINIUMS**  
MARLBOROUGH



# CHURCH BUILDING

UNIT 204

28 BROAD STREET MARLBOROUGH, MA

---

<http://st.marys-condos.com/>

(877) 311-0202

## **ST. MARY'S CONDOMINIUMS**

2.6 acre property located 1.5 miles from interchange of Route 20 and Interstate 495, situated on the top of the hill in close proximity to Lake Williams and downtown Marlborough, featuring four buildings with unique architectural style and influence on the appearance of this historic site.

### **CHURCH BUILDING**

Church Building is a historic brick building with high ceilings, generous common area, stately street entry and is the center piece of St. Mary's Condominiums site.

### **UNIT # 204**

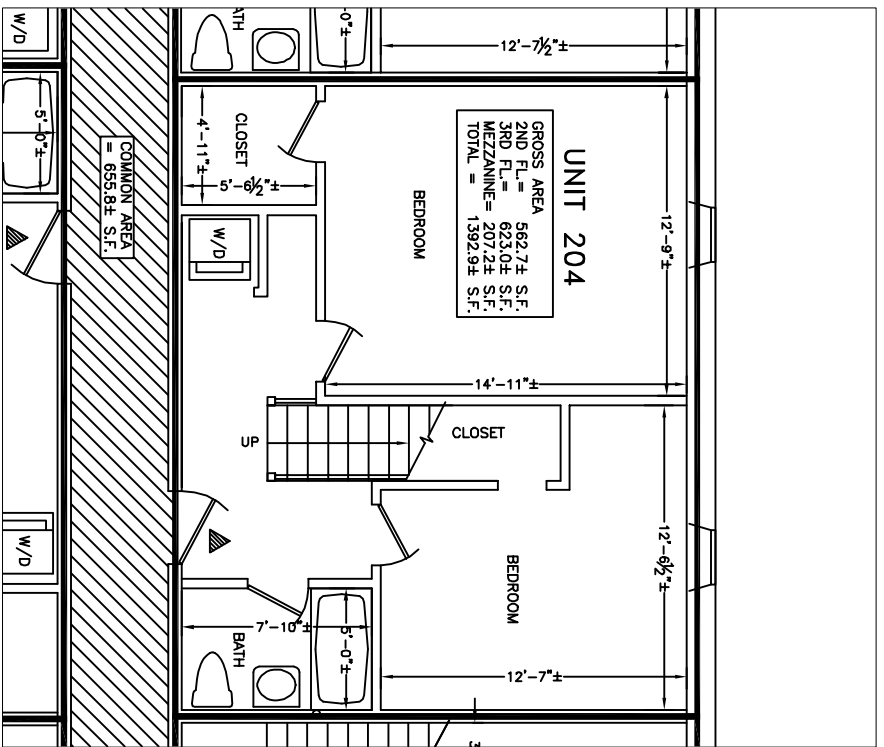
Unit 204 is a three level, 1382 square feet unit located on the second floor of Church building with two bedrooms and a full bathroom on the first level, kitchen, living, dining areas and 2<sup>nd</sup> full bathroom on the second level with spiral staircase leading to third level mezzanine overlooking the living area. The unit features cathedral ceilings with skylights in living area, 9 feet high ceilings on first level and below the mezzanine, hardwood floors in living area and hallways, ceramic tile in kitchen and bathrooms, berber carpet flooring in bedrooms, modern shaker style kitchen cabinets, granite counter tops, stainless steel appliances, washer and dryer hookups, ceramic tile around bathtub, vanities, new plumbing, new forced hot air by gas heating system with central AC, new fire protection systems including fire sprinkler and fire alarm, new windows, new 100 amps electrical service, new electrical wiring, three TV hookups, phone/network/CAT5 jacks in bedrooms and living room. The unit has two parking spaces - one assigned and one permitted <sup>1</sup>

The condominium association fee is \$180.00 and includes water, sewer, exterior and common area electrical, master insurance, road maintenance, landscaping and snow plowing.

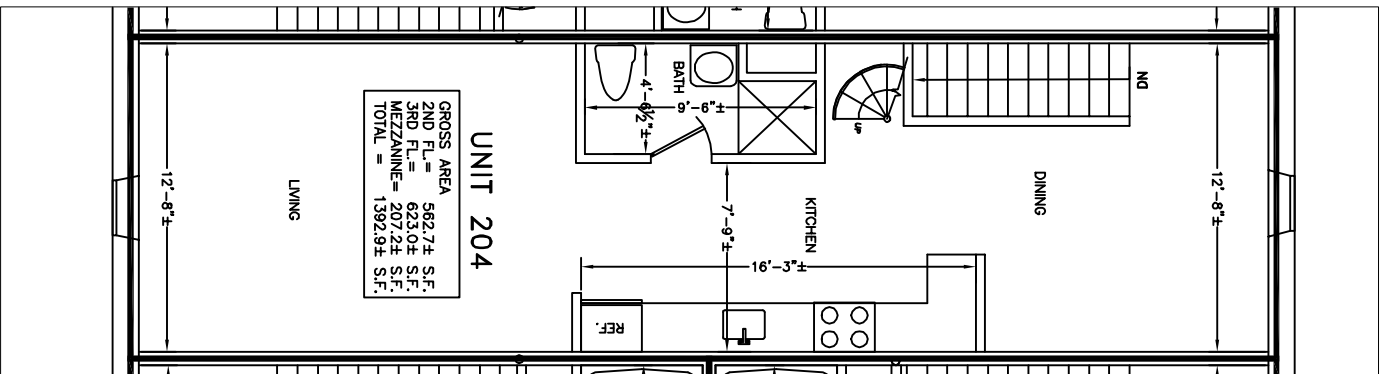
**Offered at pre-construction price for  
\$239,900**

---

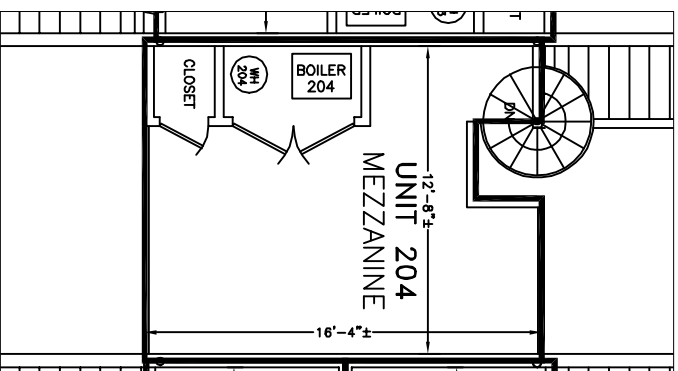
<sup>1</sup> St. Mary's Condominiums allocates 25 permitted parking spaces and 25 permits for unit owners with no space assignments. The permit may be used by unit owners, guests or rented out to other unit owners or neighbors.



**UNIT 204**  
**SECOND**  
**FLOOR**



**UNIT 204**  
**THIRD FLOOR**



**UNIT 204**  
**MEZZANINE**