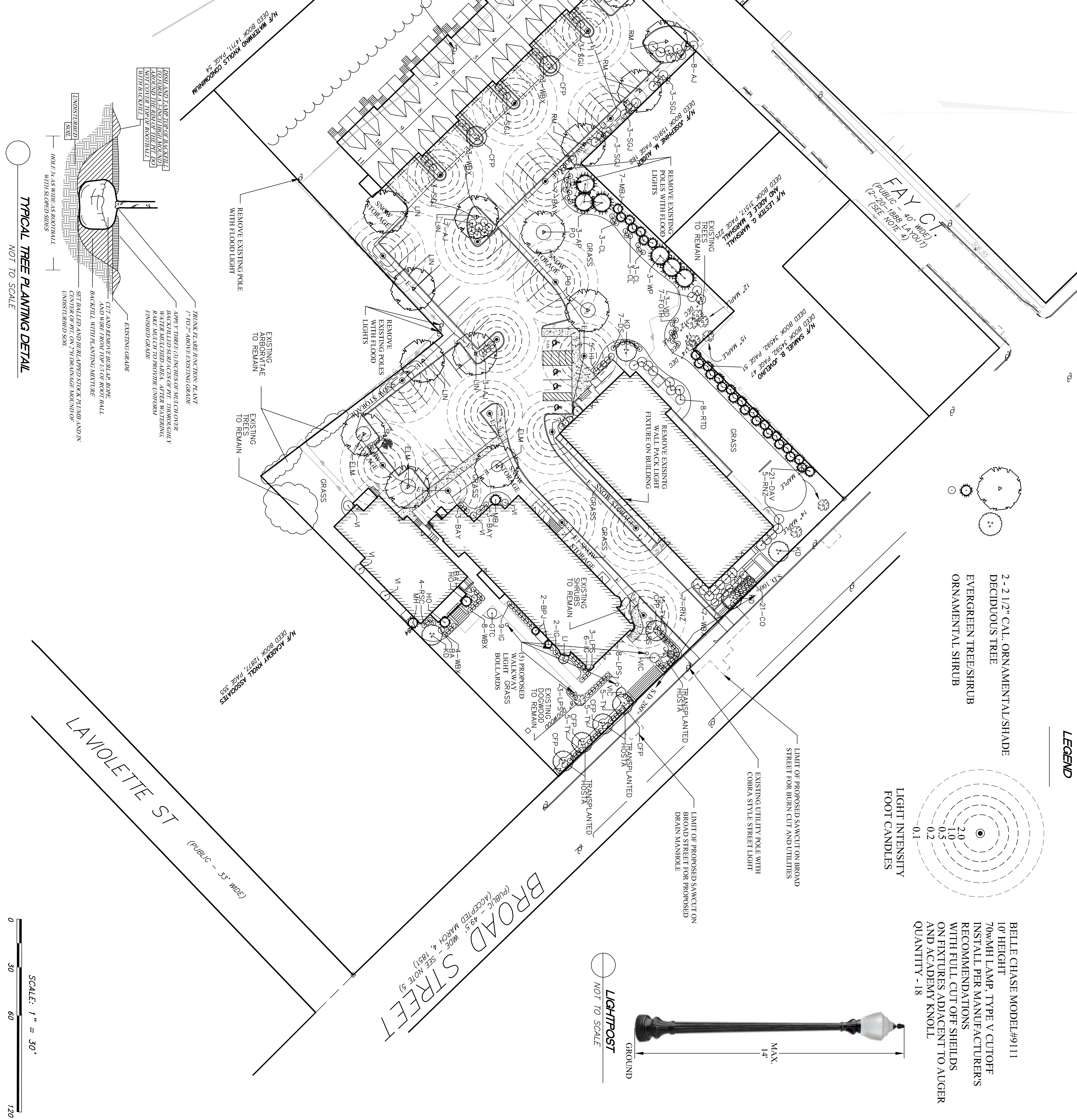


Plant Schedule

| Qty | Key | Botanical Name | Common Name | Size |
|--------------------|-----|----------------------------------|----------------------------|------------|
| TREES: | | | | |
| 7 | CFP | Prunus calleryana 'Chanticleer' | Chanticleer Flowering Pear | 2-2.5' cal |
| 3 | ELM | Ulmus americana 'Pincevent' | Pincevent American Elm | 2-2.5' cal |
| 4 | KO | Cornus kousa | Korean Dogwood | 2-2.5' cal |
| 5 | LIN | Tilia x cordata 'Greenspire' | Greenspire Linden | 2-2.5' cal |
| 2 | PRO | Quercus palustris | Pin Oak | 2-2.5' cal |
| 6 | RM | Acer rubrum 'Red Sunset' | Red Sunset Maple | 2-2.5' cal |
| EVERGREENS: | | | | |
| 3 | AP | Pinus nigra | Austrian Pine | 6-7' |
| 2 | BPJ | Juniperus chinensis 'Blue Point' | Blue Point Juniper | 4-5' |
| 2 | DAV | Thuja occidentalis 'Nigra' | Dark American Arborvitae | 4-5' |
| 8 | MBJ | Juniperus chinensis 'Muntzeana' | Mountain Juniper | 4-5' |
| 3 | WP | Pinus strobus | White Pine | 6-7' |

| SHRUBS: | | | | |
|---------|------|---|----------------------------|--------|
| 18 | AJ | Juniperus horizontalis 'Andorra Compacta' | Andorra Juniper | 18-24" |
| 2 | BA | Pieris x Brouwers Beauty | Brouwers Beauty Andromeda | 2-2.5' |
| 13 | BAY | Myrica pensylvanicum | Northern Bayberry | 2-2.5' |
| 9 | CL | Clethra alnifolia | Sweet Pepper | 18-24" |
| 21 | CO | Cotoneaster dammeri 'Lowfast' | Lowfast Cotoneaster | 15-18" |
| 7 | DS | Spiraea japonica 'Alpina' | Daphne Spiraea | 15-18" |
| 7 | FOTH | Fothergilla gardenii | Deert Fothergilla | 18-24" |
| 1 | GTG | Chamaecyparis plicata 'Filifera Aurea Nama' | Golden Thread Cypress | 2-2.5' |
| 5 | HI | Taxus media 'Hicksii' | Hicks's Yew | 2-2.5' |
| 2 | HO | Ilex meservee 'Blue Princess' | Blue Princess Holly | 5-6' |
| 17 | IG | Ilex glabra 'Shamrock' | Shamrock Inkberry | 18-24" |
| 1 | LI | Syringa wilgans | Common Lilac | 4-5' |
| 14 | LPS | Spiraea japonica 'Little Princess' | Little Princess Spiraea | 18-24" |
| 1 | MH | Ilex meservee 'Blue Prince' | Blue Prince Holly | 3-3.5' |
| 12 | RNZ | Rhododendron 'Nova Zembla' | Nova Zembla Rhododendron | 3-3.5' |
| 4 | RSC | Rhododendron 'scintillation' | Scintillation Rhododendron | 2-2.5' |
| 22 | RTD | Cornus alba 'Elegantissima' | Vargated Red Twig Dogwood | 18-24" |
| 18 | SGJ | Juniperus chinensis 'Sea Green' | Sea Green Juniper | 18-24" |
| 30 | TY | Taxus media 'Taurinoni' | Taunton Spreading Yew | 18-24" |
| 6 | VI | Viburnum plicatum 'Mariesi' | Douglas Viburnum | 3-4' |
| 2 | VIC | Viburnum cerasiifolium | Mayflower Viburnum | 3-4' |
| 3 | VID | Viburnum dentatum | Arrowwood | 3-4' |
| 28 | WBX | Buxus Wintergreen | Wintergreen Boxwood | 18-24" |



Prepared for:

St. Mary's of French Hill Redevelopment, LLC

69 Lowell Avenue
Newton, Massachusetts 02460

Site Plan

for
A 36 Unit Condominium Development

St. Mary's of French Hill Redevelopment, LLC
26 Broad Street
Marlborough, Massachusetts

HANCOCK ASSOCIATES

Civil Engineers
Land Surveyors
Landscape Architects
Environmental Consultants

28 LORD ROAD, SUITE 280
MARLBOROUGH, MA 01752
VOICE (508) 466-1111, FAX (508) 466-1121
WWW.HANCOCKASSOCIATES.COM

| | | |
|-----|------------------|---------------------|
| NO. | DATE | ISSUE DESCRIPTION |
| 1 | KLB/JDP 10/27/06 | REVISION # OF UNITS |
| 2 | EF/JDP 11-1-06 | TEXT REV'S |
| 3 | EF/JDP 6-13-07 | SPRC PREP. |
| 4 | EF/JDP 7-30-07 | CITY COMMENTS |

DATE: 3/21/06
SCALE: 1"=30'
DRAWN BY: EF/JDP
CHECK BY: JDP

LANDSCAPE AND LIGHTING PLAN

DWG: 12564-018-8.dwg
LAYOUT: L&L
SHEET: 6 OF 11
PROJECT NO.: 12564